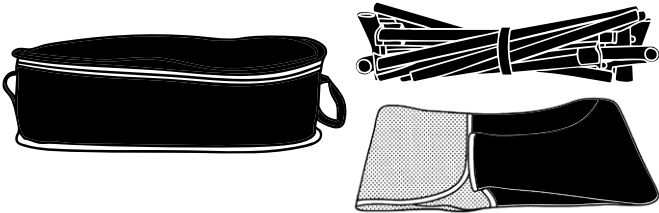


LL8356

Marlin Folding Chair

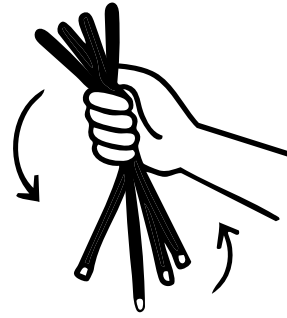
Setup Guide



STEP 1

Remove contents from the bag.

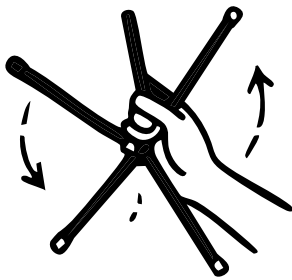
- Take the folded frame and seat cover out of the carry bag and place them on the ground to begin setup.



STEP 2

Loosen the frame.

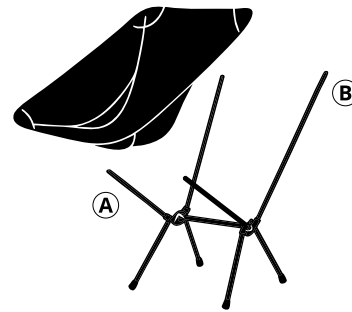
- Hold the centre of the frame and gently shake left and right.
- The shock-corded poles will fall into place naturally.



STEP 3

Assemble the frame.

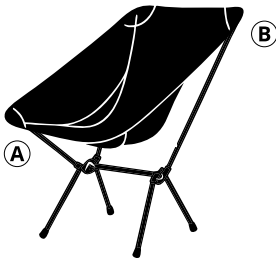
- Allow the poles to guide themselves into position.
- Join each end into its matching socket to fully construct the frame.



STEP 4

Attach the seat - Bottom first.

- Stretch the fabric down and attach the bottom (A) corners to the lower poles.



STEP 5

Attach the seat - Top next.

- With the frame standing, connect the top (B) corners of the seat fabric to the top poles.

Tip: Remove one pole to aid with placing the fabric on.



STEP 6

Chair is Ready for Use!

- Sit back and enjoy the comfort and support of your Marlin Folding Chair!

Designed for ease. Built for adventure.