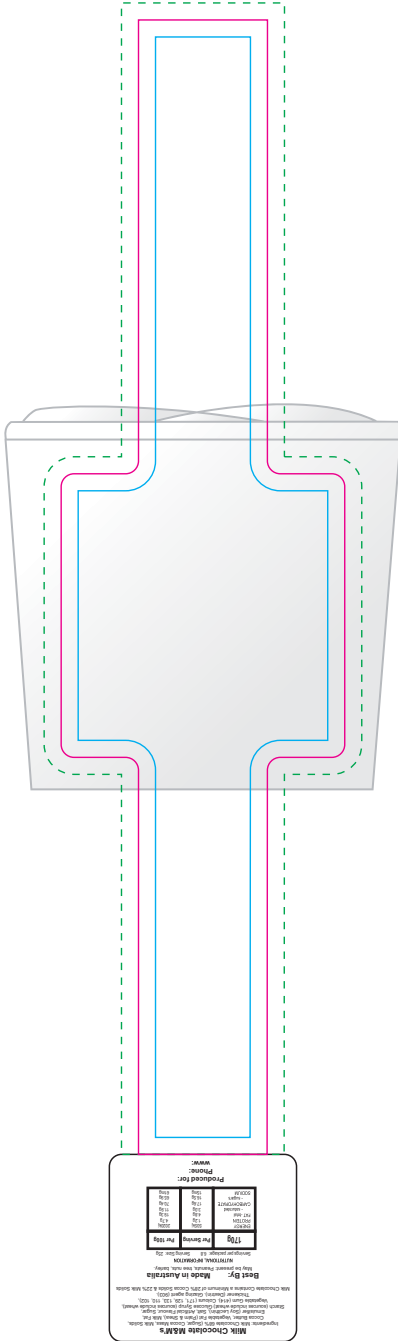


LL33022 - M&M's in Clear Mini Noodle Box



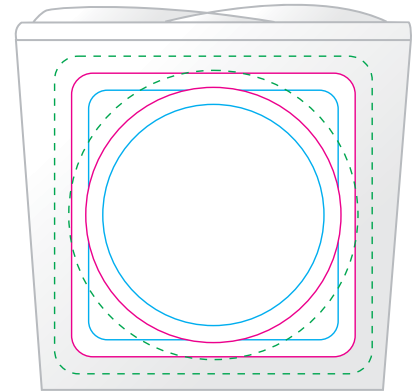
Some chipping/break up of M&M's is unavoidable and considered acceptable.

Below is showing at approx 75% of size



Print Area: 50mmL x 200mmH
Actual print size: xxmmL x xxmmH

Max print area for copy & text ———
Finished print area ———
Bleed line - - - - -



Print Area: 50mmL x 50mmH
Actual print size: xxmmL x xxmmH

Print Area: 45mm Diameter
Actual print size: xxmmL x xxmmH

Max print area for copy & text ———
Finished print area ———
Bleed line - - - - -

Milk Chocolate M&M's
 Ingredients: Milk Chocolate 88% (Sugar, Cocoa Mass, Milk Solids, Cocoa Butter, Vegetable Fat (Palm & Shea), Milk Fat, Emulsifier (Soy Lecithin), Salt, Artificial Flavour, Sugar, Starch (sources include wheat), Chocolate Syrup (sources include wheat), Vegetable Gum (E414), Colours (E171, E126, E131, E132, E133, E135, E139, E142), Thickener (Gellan), Glazing agent (E902).
 Milk Chocolate Contains a Minimum of 28% Cocoa Solids & 22% Milk Solids

Best By: Made in Australia
 May be present: Peanuts, tree nuts, barley

NUTRITIONAL INFORMATION
 Savings per package: 8.8 Serving Size: 25g

	170g	Per Serving	Per 100g
ENERGY	505	202%	
PROTEIN	12g	47%	
FAT total	4.6g	18.5%	
-saturated	2.6g	11.3%	
CARBOHYDRATE	17.5g	70.4%	
-sugar	15.5g	62.0%	
SODIUM	150mg	64%	

Produced for:
Phone:
www:

Statutory Ingredients label is adhered to base.
Please check your details.

